



GREEN MOUNTAIN VENEER

# 2021 STONE CATALOG

Natural Thin Stone Veneer • Full Bed Building Stone • Manufactured  
Veneer Stone • Bricks and Blocks



## Table of Contents

### **Natural Stone Veneer**

Style Guide	3
Laticrete	4
Ashlar	6
Squares & Rectangles	8
Mosaic	10
Ledge	12

### **Manufactured Stone Veneer**

Contempo	14
Granada	15
Vivace	16
Legato	17
Finesse	18

### **Bricks & Blocks**

Crossroads Bricks	20
Select Series Bricks	21
Hoosier Bricks	21
Architectural Bricks	22
Profile Series Blocks	23

# NATURAL STONE STYLE GUIDE

## ASHLAR

This stone provides a linear look with long, fairly rectangular shapes. It exhibits the face of the stone, revealing striations that can be very colorful.



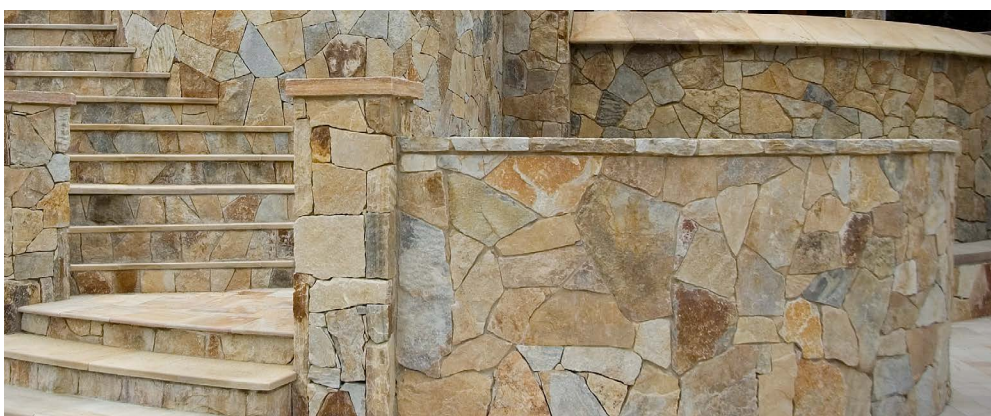
## SQUARES & RECTANGLES

These natural seam faced pieces are guillotined and formed into rough squares and rectangles.



## MOSAIC

Irregular shaped quarry material exhibiting the seam face and/or the natural face of the stone. No shape is the same size or cut, making each stone and project unique.



## LEDGE

This roughly rectangular shaped cut has a linear appearance with a shallow, slightly varied height. Both the seam and the split faces can be seen with the split face dominating the stone blend.



# LATICRETE



**MVIS Air & Water  
Barrier**

\$105/one gallon  
\$425/five gallons



**MVIS Hi-Bond  
Veneer Mortar**

\$59/50lb bag



**MVIS Veneer  
Mortar**

\$49/40lb bag



**MVIS Pointing  
Mortar**

\$32/50lb bag



Vermont Ash Gray Mica, Squares & Rectangles



Vermont Ash Gray Mica, Mosaic



South Bay Quartzite, Ashlar



Corinthian Granite, Mosaic



South Bay Quartzite,  
Squares & Rectangles



Ticonderoga Granite, Mosaic

## Natural Stone Veneer

Natural stone varies in color, veining and pattern. Photos are meant to be representational, actual stone received will vary. All product photos feature field-trimmed stones. Depending on your desired look, more or less trimming may be needed.



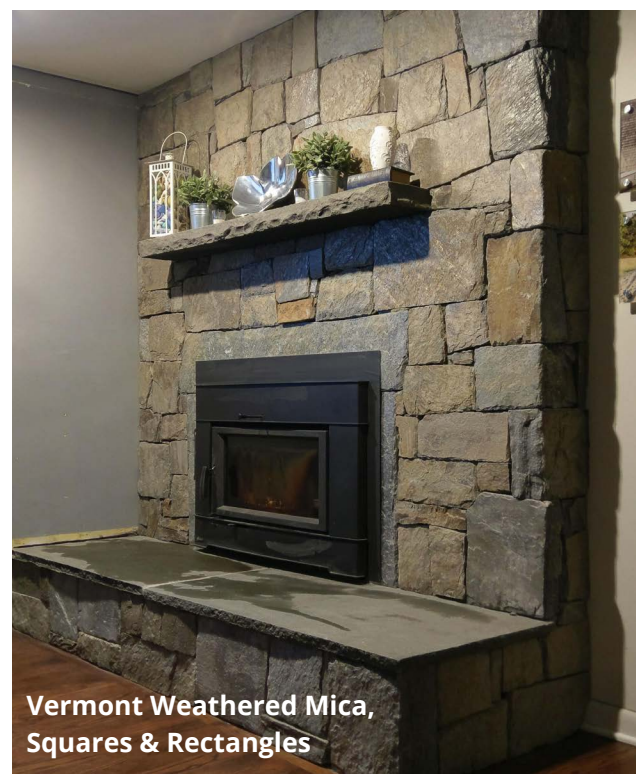
American Granite, Mosaic



Vermont Ash Gray Mica,  
Ashlar and Ledge blend



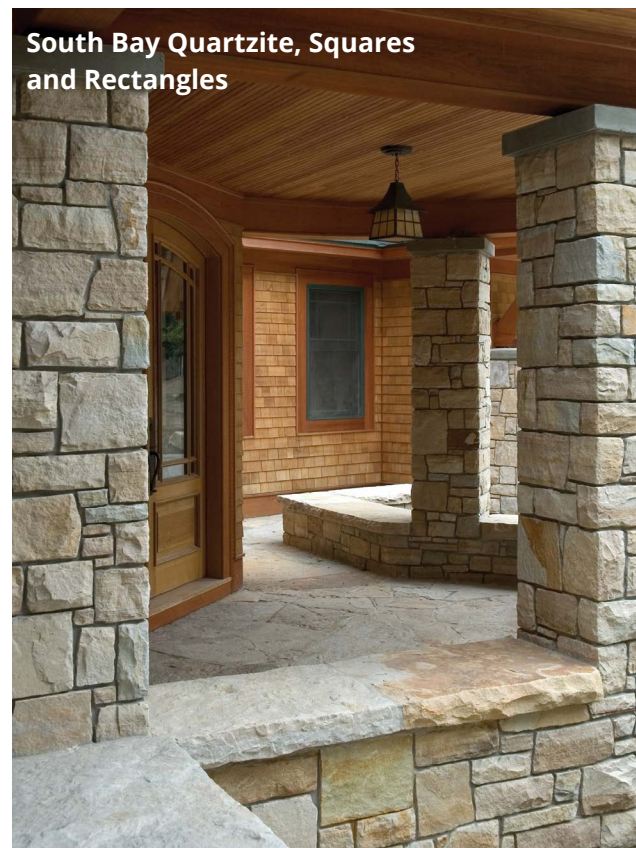
American Granite, Ledge  
and Squares & Rectangles  
blend



Vermont Weathered Mica,  
Squares & Rectangles



Saratoga Granite,  
Ashlar



South Bay Quartzite, Squares  
and Rectangles



South Bay Quartzite



Vermont Ash Gray



Allegheny

Thin Flats \$14.05/square foot  
Thin Corners \$22.05/linear foot

**Sawn Back Thin Veneer Specifications**

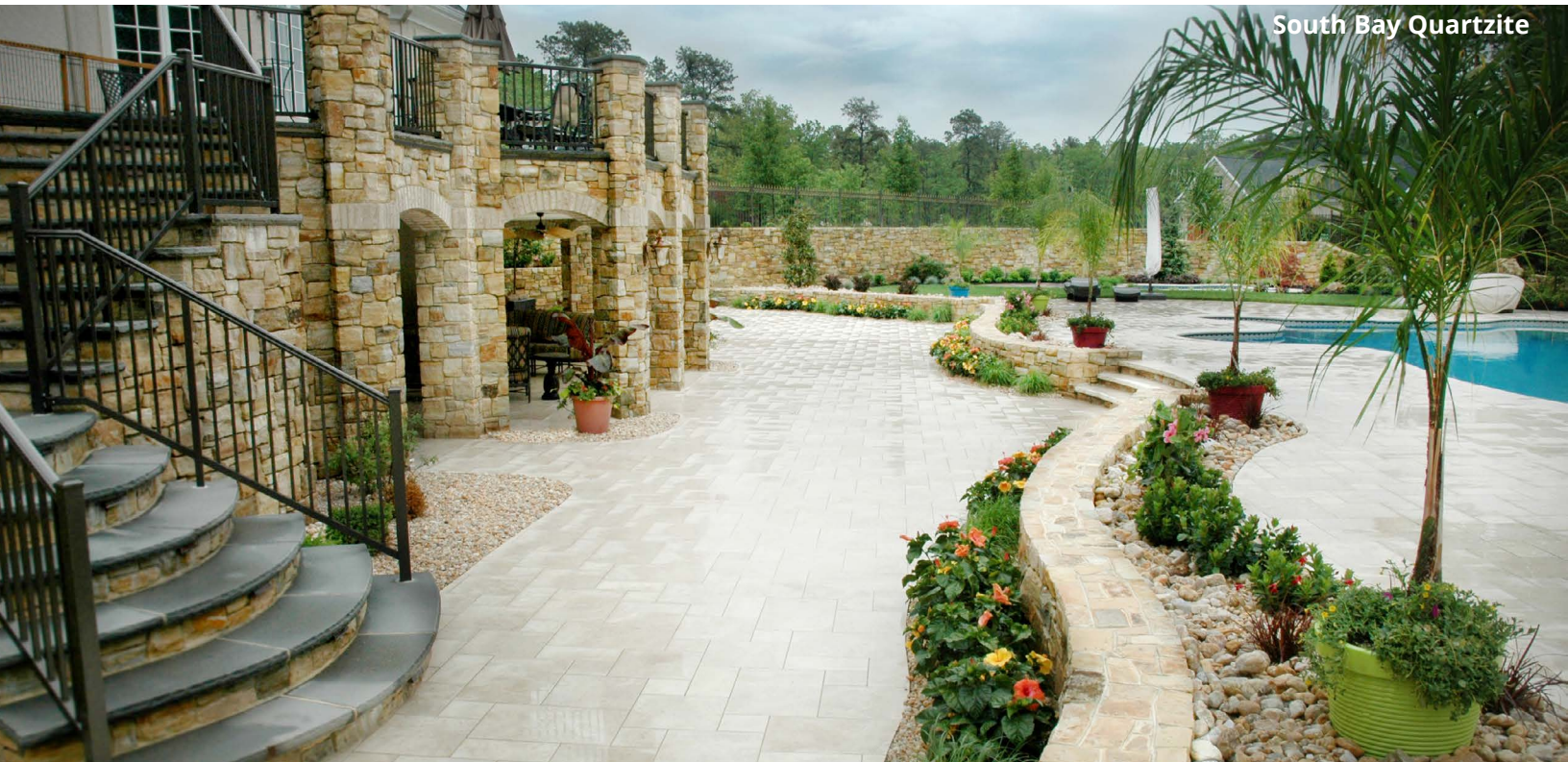
Thickness: 3/4" to 1 1/2"  
Height: 4"+/- to 12"+/-  
Corners: 3" return minimum  
Length: 6"+/- to 20"+/-  
Weight: up to 15 lbs per square

**Full Bed Building Stone Specifications**

Thickness: 3" to 6"  
Height: 4"+/- to 12"+/-  
Length: 6"+/- to 20"+/-  
Coverage: 35-40 square feet per ton



Corinthian Granite



South Bay Quartzite

# NATURAL STONE VENEER



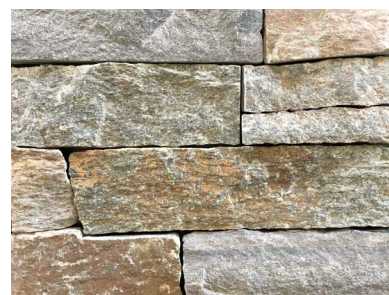
**Copper Mountain**

Thin Flats \$13.65/square foot  
Thin Corners \$22.05/linear foot



**Neva**

Thin Flats \$14.05/square foot  
Thin Corners \$22.05/linear foot



**Tuscan Blend**

Thin Flats \$14.05/square foot  
Thin Corners \$22.05/linear foot



**Vermont Ash Gray Mica**

Thin Flats \$13.20/square foot  
Thin Corners \$20.85/linear foot



**Vermont Verde Mica**

Thin Flats \$13.20/square foot  
Thin Corners \$20.85/linear foot



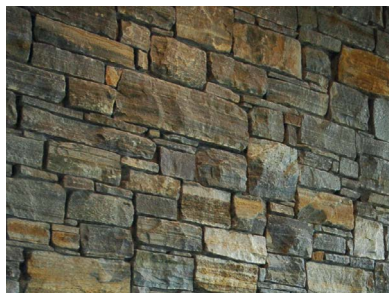
**Vermont Weathered Mica**

Thin Flats \$13.20/square foot  
Thin Corners \$20.85/linear foot



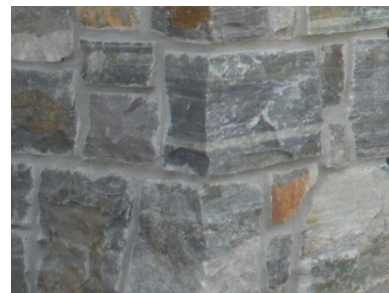
**American Granite**

Thin Flats \$20.20/square foot  
Thin Corners \$23.75/linear foot  
Full Bed \$675/ton



**Corinthian Granite**

Thin Flats \$16.10/square foot  
Thin Corners \$19.65/linear foot  
Full Bed \$535/ton



**Saratoga Granite**

Thin Flats \$16.10/square foot  
Thin Corners \$19.65/linear foot  
Full Bed \$535/ton



**South Bay Quartzite**

Thin Flats \$16.10/square foot  
Thin Corners \$19.65/linear foot  
Full Bed \$535/ton



**Ticonderoga Granite**

Thin Flats \$16.10/square foot  
Thin Corners \$19.65/linear foot  
Full Bed \$545/ton



**Wood Creek Granite**

Thin Flats \$16.10/square foot  
Thin Corners \$19.65/linear foot  
Full Bed \$545/ton

ASHLAR

ASHLAR

ASHLAR

ASHLAR



Saratoga Granite



Corinthian Granite



Wood Creek Granite



Allegheny

Thin Flats \$13.50/square foot  
Thin Corners \$20.85/linear foot



Vermont Ash Gray Mica

### Sawn Back Thin Veneer Specifications

Thickness: 3/4" to 1 1/2"  
Facing Area: 1/4 sqft+/- to 1 1/4sqft+/-  
Corners: 3" return minimum  
Weight: up to 15 lbs per square foot

### Full Bed Building Stone Veneer Specifications

Thickness: 3" to 6"  
Facing Area: 1/4 sqft+/- to 3 sqft+/-  
Coverage: 35-40 square feet per ton



American Granite

# NATURAL STONE VENEER



**Copper Mountain**

Thin Flats \$13.50/square foot  
Thin Corners \$20.85/linear foot



**Neva**

Thin Flats \$13.50/square foot  
Thin Corners \$20.85/linear foot



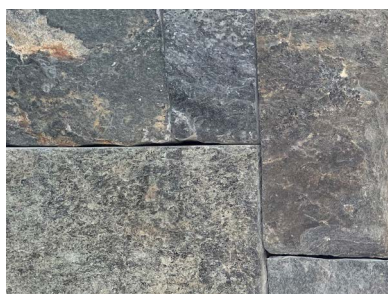
**Tuscan Blend**

Thin Flats \$13.20/square foot  
Thin Corners \$20.85/linear foot



**Vermont Ash Gray Mica**

Thin Flats \$12.90/square foot  
Thin Corners \$19.70/linear foot



**Vermont Verde Mica**

Thin Flats \$12.90/square foot  
Thin Corners \$19.70/linear foot



**Vermont Weathered Mica**

Thin Flats \$12.60/square foot  
Thin Corners \$19.70/linear foot



**American Granite**

Thin Flats \$20.20/square foot  
Thin Corners \$23.75/linear foot  
Full Bed \$675/ton



**Corinthian Granite**

Thin Flats \$16.10/square foot  
Thin Corners \$19.65/linear foot  
Full Bed \$535/ton



**Saratoga Granite**

Thin Flats \$16.10/square foot  
Thin Corners \$19.65/linear foot  
Full Bed \$535/ton



**South Bay Quartzite**

Thin Flats \$16.10/square foot  
Thin Corners \$19.65/linear foot  
Full Bed \$535/ton



**Ticonderoga Granite**

Flats \$16.10/square foot  
Corners \$19.65/linear foot  
Full Bed \$555



**Wood Creek Granite**

Thin Flats \$16.10/square foot  
Thin Corners \$19.65/linear foot  
Full Bed \$555/ton

ROUGHLY SQUARE & RECTANGULAR



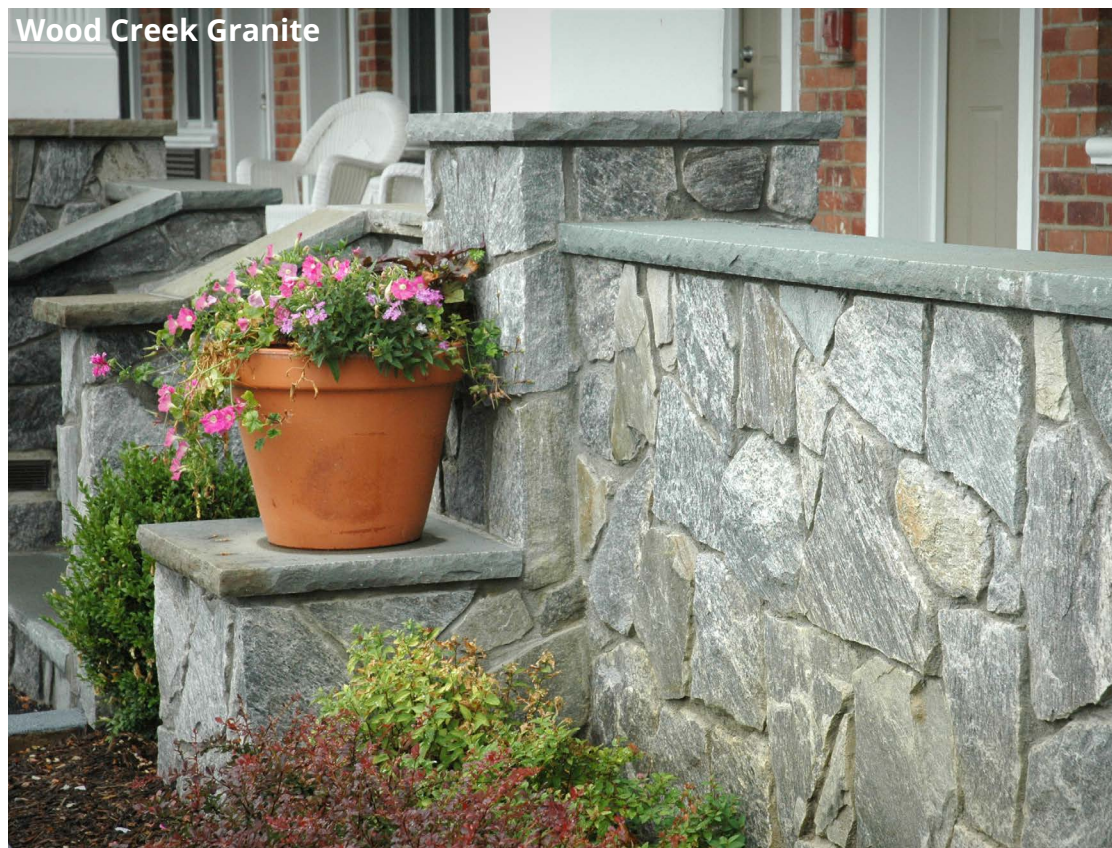
American Granite



Corinthian Granite



Vermont Weathered  
Mica



Wood Creek Granite

# NATURAL STONE VENEER

## Sawn Back Thin Veneer Specifications

Thickness: 3/4" to 1 1/2"  
Facing Area: 1/4 sqft+/- to 1 1/4 sqft+/-  
Corners: 3" return minimum

## Full Bed Building Stone Veneer Specifications

Thickness: 3" to 6"  
Facing Area: 1/4 sqft+/- to 3 sqft+/-



### Native Fieldstone

Thin Flats \$12.90/square foot  
Thin Corners \$20.85/linear foot



### Copper Mountain

Thin Flats \$12.90/square foot  
Thin Corners \$19.70/linear foot



### Vermont Ash Gray Mica

Thin Flats \$12.00/square foot  
Thin Corners \$18.50/linear foot



### Vermont Weathered Mica

Thin Flats \$12.00/square foot  
Thin Corners \$18.50/linear foot



### American Granite

Thin Flats \$20.20/square foot  
Thin Corners \$23.75/linear foot  
Full Bed \$510/ton



### Corinthian Granite

Thin Flats \$16.10/square foot  
Thin Corners \$19.65/linear foot  
Full Bed \$450/ton



### Saratoga Granite

Thin Flats \$16.10/square foot  
Thin Corners \$19.65/linear foot  
Full Bed \$475/ton



### South Bay Quartzite

Thin Flats \$16.10/square foot  
Thin Corners \$19.65/linear foot  
Full Bed \$450/ton



### Ticonderoga Granite

Thin Flats \$16.10/square foot  
Thin Corners \$19.65/linear foot  
Full Bed \$485/ton



### Wood Creek Granite

Thin Flats \$16.10/square foot  
Thin Corners \$19.65/linear foot  
Full Bed \$450/ton

MOSAIC

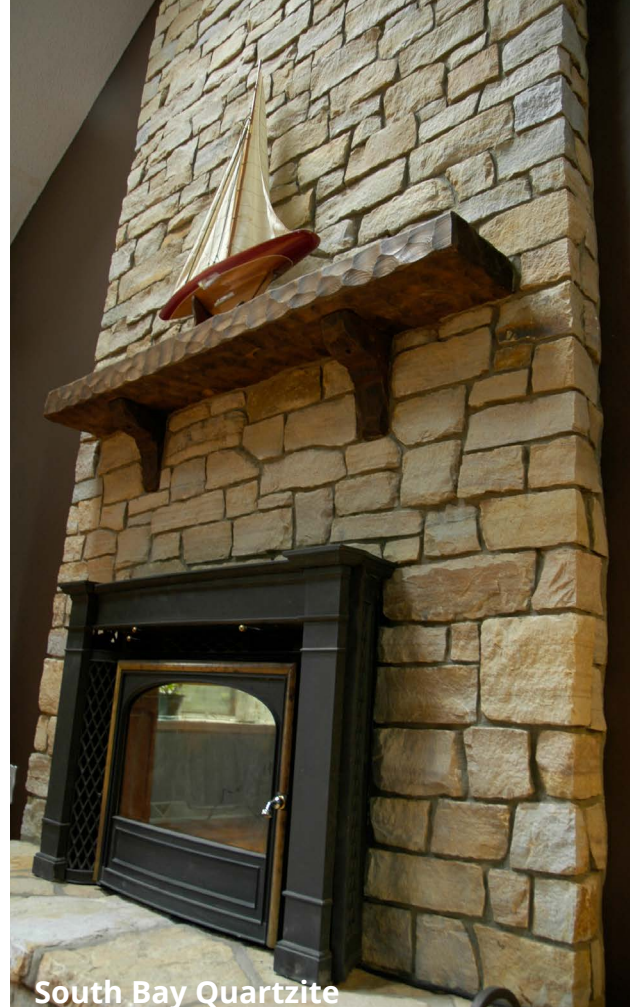
MOSAIC

MOSAIC

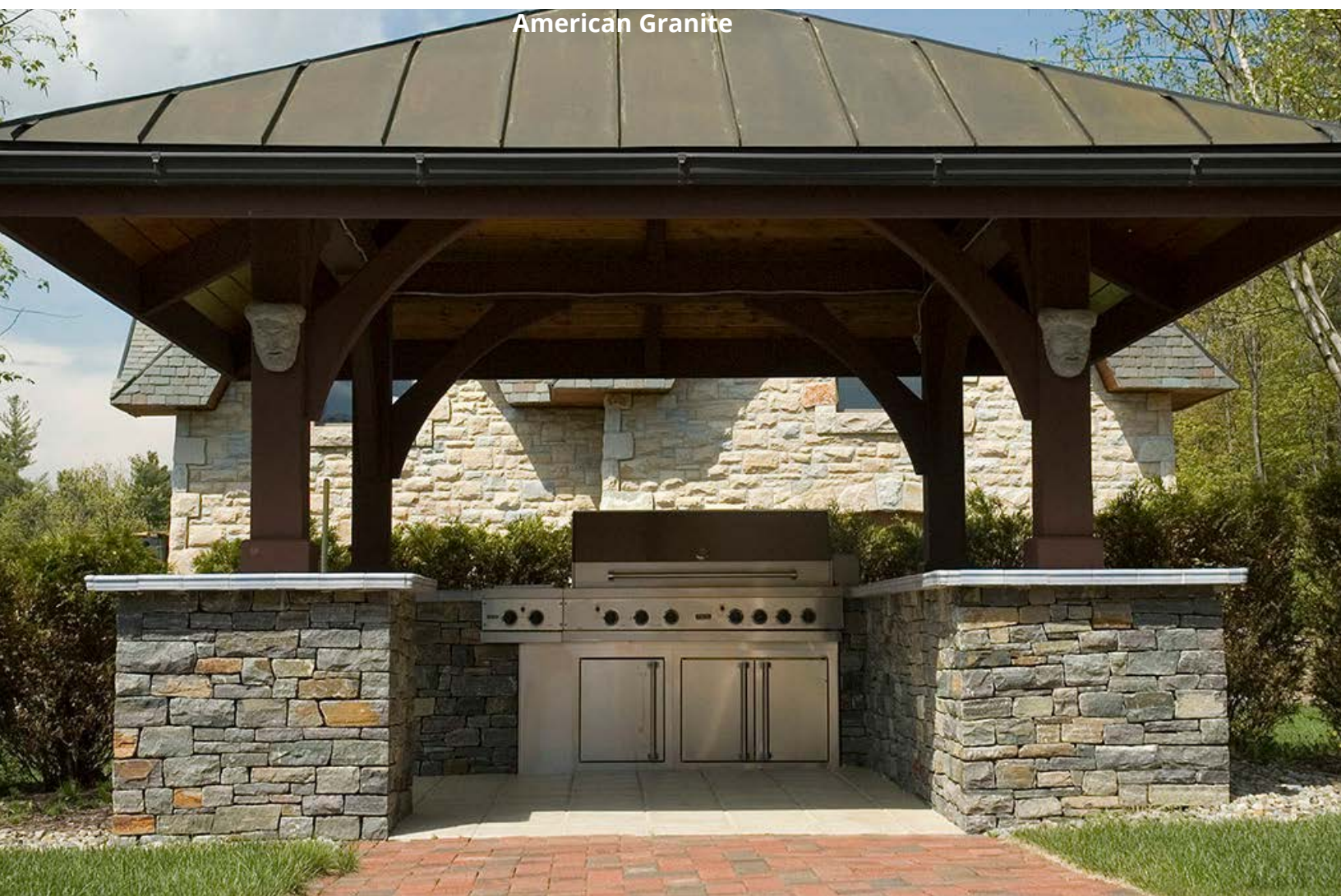
MOSAIC



American Granite



South Bay Quartzite



American Granite

# NATURAL STONE VENEER



## American Granite

Thin Flats \$20.20/square foot  
Thin Corners \$23.75/linear foot  
Full Bed \$700/ton



## Corinthian Granite

Thin Flats \$16.10/square foot  
Thin Corners \$19.65/linear foot  
Full Bed \$535/ton



## Saratoga Granite

Thin Flats \$16.10/square foot  
Thin Corners \$19.65/linear foot  
Full Bed \$535/ton



## South Bay Quartzite

Thin Flats \$16.10/square foot  
Thin Corners \$19.65/linear foot  
Full Bed \$535/ton



## Ticonderoga Granite

Thin Flats \$16.10/square foot  
Thin Corners \$19.65/linear foot  
Full Bed \$595/ton



## Wood Creek Granite

Thin Flats \$16.10/square foot  
Thin Corners \$19.65/linear foot  
Full Bed \$595/ton



## Sawn Back Thin Veneer Specifications

Thickness: 3/4" to 1 1/2"  
Height: 1" +/- to 5" +/-  
Length: 6" +/- to 12" +/-  
Corners: 3" return minimum  
Weight: up to 15 lbs per square

## Full Bed Building Stone Specifications

Thickness: 3" to 6"  
Height: 3" +/- to 6" +/-  
Length: 8" +/- to 12" +/-  
Coverage: 35 - 40 square feet per

LEDGE

LEDGE

LEDGE

LEDGE

# MANUFACTURED STONE VENEER

CONTEMPO

CONTEMPO

CONTEMPO

## Contempo Combo \$8.03/sqft

78 square feet per pallet  
2,939 lbs per pallet  
198 pieces per pallet  
Includes eleven sizes  
Depth: 3 1/2"  
Heights: 2 1/4", 4 7/8"  
Lengths: 9 1/2", 11 3/8", 13 3/8", 15 3/8",  
17 3/8", 19 1/4", 21 1/4", 23 1/4"

## Contempo Large Combo \$8.32/sqft

77.5 square feet per pallet  
3,126 lbs per pallet  
72 pieces per pallet  
Includes five sizes  
Depth: 3 1/2"  
Heights: 7 1/2"  
Lengths: 15 3/8", 17 3/8", 19 1/4",  
21 1/4", 23 1/4"



With smooth, clean lines and textures this chic linear style provides elegance for today's modern design trends. It easily combines with Granada and Finesse for fresh sophistication.



Dover



Nickel



Olive



Onyx



Sandbar



Shadow





### Granada Combo \$7.98/sqft

78 square feet per pallet

2,939 lbs per pallet

198 pieces per pallet

Includes eleven sizes

Depth: 3 1/2"

Heights: 2 1/4", 4 7/8"

Lengths: 9 1/2", 11 3/8", 13 3/8",  
15 3/8", 17 3/8", 19 1/4", 21 1/4",  
23 1/4"

### Granada Large Combo \$8.27/sqft

77.5 square feet per pallet

3,126 lbs per pallet

72 pieces per pallet

Includes five sizes

Depth: 3 1/2"

Heights: 7 1/2"

Lengths: 15 3/8", 17 3/8", 19 1/4",  
21 1/4", 23 1/4"

The marbled colors and refined texture make this a versatile element that brings sophistication and elegance to any design style.



Ashland



Escarpment



Midnight



Sunrise



GRANADA

GRANADA

GRANADA

# MANUFACTURED STONE VENEER

## Vivace Combo Bundle \$7.88/sqft

76 square feet per pallet, 2,965 lbs per pallet

Depth x Height x Lengths (includes fourteen sizes)

3 1/2" x 4" x 7", 8 1/2", 10", 11 1/2", 13", 14 1/2", 16"

3 1/2" x 7" x 7", 8 1/2", 10", 11 1/2", 13", 14 1/2", 16"

## Vivace Large Combo Bundle \$8.08/sqft

68 square feet per pallet, 2,778 lbs per pallet

Depth x Height x Lengths (includes six sizes)

3 1/2" x 11 1/2" x 13", 14 1/2", 16", 17 1/2", 19", 20 1/2"

## Vivace Linear Combo Bundle \$7.73/sqft

65 square feet per pallet, 2,613 lbs per pallet

Depth x Height x Lengths (includes seven sizes)

3 1/2" x 4" x 7", 8 1/2", 10", 11 1/2", 13", 14 1/2", 16"



With rich, bold colors and a chiseled stone look, this concrete stone blends quality, strength and durability with beauty and aesthetic appeal.



Charcoal



Cortona



Embassy



Milano



Palermo Beige



Siena



Tweed



Verona



VIVACE

VIVACE

VIVACE

VIVACE



Legato Concrete Brick \$7.58/sqft  
 82 square feet per pallet  
 3,040 lbs per pallet  
 320 pieces per pallet  
 Premier Plus Size:  
 3 1/2"d x 3 1/8"h x 10 1/8"l

This subtly textured concrete stone is designed to compliment the Vivace series. With a look of hand chiseled stone, the Legato is manufactured in a premier plus size and is easy to install.



Khaki



Midnight



Pewter



Sepia



LEGATO

LEGATO

LEGATO

LEGATO

# MANUFACTURED STONE VENEER

These multifunctional design elements can be used as a feature, surround, or decorative accent on load bearing walls and at-grade applications. With a vast selection of colors and finishes available Finesse will provide the ideal finishing touches to your design. The sizes course out perfectly with Contempo, Granada, Legato and premier plus brick sizes.



## Finesse Premier Plus

Depth 90mm (3 1/2")  
Height 79mm (3 1/8")  
Length 257mm (10 1/8")  
320 pieces per pallet  
3040 lbs per pallet  
Classic Standard: \$2.41 ea  
Classic Finished: \$2.63 ea  
Premium Standard: \$2.56 ea  
Premium Finished: \$2.74 ea



## Finesse 90x290 Stone

Depth 90mm (3 1/2")  
Height 90mm (3 1/2")  
Length 290mm (11 3/8")  
240 pieces per pallet  
2952 lbs per pallet  
Classic Standard: \$4.56 ea  
Classic Finished: \$6.30 ea  
Premium Standard: \$5.35 ea  
Premium Finished: \$7.10 ea



## Finesse 90x390 Stone

Depth 90mm (3 1/2")  
Height 90mm (3 1/2")  
Length 290mm (11 3/8")  
180 pieces per pallet  
3060 lbs per pallet  
Classic Standard: \$6.76 ea  
Classic Finished: \$8.49 ea  
Premium Standard: \$8.80 ea  
Premium Finished: \$10.53 ea



## Finesse 190x390 Stone

Depth 90mm (3 1/2")  
Height 190mm (7 1/2")  
Length 390mm (15 3/8")  
90 pieces per pallet  
3150 lbs per pallet  
Classic Standard: \$11.32 ea  
Classic Finished: \$12.77 ea  
Premium Standard: \$13.13 ea  
Premium Finished: \$15.27 ea



## Finesse 90x590 Stone

Depth 90mm (3 1/2")  
Height 90mm (3 1/2")  
Length 590mm (23 1/4")  
120 pieces per pallet  
3000 lbs per pallet  
Classic Standard: \$12.31 ea  
Classic Finished: \$13.86 ea  
Premium Standard: \$14.09 ea  
Premium Finished: \$16.70 ea



## Finesse 168x590 Stone

Depth 90mm (3 1/2")  
Height 168mm (6 5/8")  
Length 590mm (23 1/4")  
60 pieces per pallet  
2820 lbs per pallet  
Classic Standard: \$18.99 ea  
Classic Finished: \$22.65 ea  
Premium Standard: \$22.24 ea  
Premium Finished: \$25.09 ea



## Finesse 190x590 Stone

Depth 90mm (3 1/2")  
Height 190mm (7 1/2")  
Length 590mm (23 1/4")  
60 pieces per pallet  
3180 lbs per pallet  
Classic Standard: \$21.13 ea  
Classic Finished: \$24.78 ea  
Premium Standard: \$24.49 ea  
Premium Finished: \$27.30 ea



## Finesse 257x590 Stone

Depth 90mm (3 1/2")  
Height 257mm (10 1/8")  
Length 590mm (23 1/4")  
40 pieces per pallet  
2880 lbs per pallet  
Classic Standard: \$29.34 ea  
Classic Finished: \$30.37 ea  
Premium Standard: \$32.70 ea  
Premium Finished: \$33.71 ea



## Finesse 290x590 Stone

Depth 90mm (3 1/2")  
Height 290mm (11 3/8")  
Length 590mm (23 1/4")  
36 pieces per pallet  
2898 lbs per pallet  
Classic Standard: \$31.29 ea  
Classic Finished: \$34.28 ea  
Premium Standard: \$34.96 ea  
Premium Finished: \$37.93 ea



## Finesse Keystone

Depth 100mm (4")  
Height 346mm (13 5/8")  
Length 240mm (9 1/2")  
60 pieces per pallet  
2115 lbs per pallet  
Classic Standard: \$17.39 ea  
Classic Finished: \$24.43 ea  
Premium Standard: \$19.21 ea  
Premium Finished: \$28.18 ea



## Finesse Window Sill

Depth 150mm (5 7/8")  
Height 80mm (3 1/8")  
Length 813mm (32")  
48 pieces per pallet  
2400 lbs per pallet  
\*White Standard: \$14.69 ea  
\*White Quartz: \$19.60 ea  
Classic Standard: \$16.46 ea  
Classic Quartz: \$21.69 ea  
Premium Standard: \$18.28 ea  
Premium Quartz: \$21.98 ea



## Finesse Accent Sill

Depth 168mm (6 5/8")  
Height 125mm (5")  
Length 914mm (36")  
30 pieces per pallet  
2940 lbs per pallet  
Classic Standard: \$42.46 ea  
Classic Finished: \$47.12 ea  
Premium Standard: \$50.54 ea  
Premium Finished: \$54.65 ea



## Finesse 590 Sill with Drip Edge

Depth 190mm (7 1/2")  
Height 90mm (3 1/2")  
Length 590mm (23 1/4")  
60 pieces per pallet  
3180 lbs per pallet  
Classic Standard: \$23.76 ea  
Classic Finished: \$32.51 ea  
Premium Standard: \$27.20 ea  
Premium Finished: \$36.25 ea



## Finesse Corner Stone

Depth 90mm (3 1/2")  
Height 190mm (7 1/2")  
Return Corner Length 190mm (7 1/2")  
Face Length 390mm (15 5/8")  
72 pieces per pallet  
2952 lbs per pallet  
Classic Standard: \$17.34 ea  
Classic Finished: \$19.09 ea  
Premium Standard: \$19.83 ea  
Premium Finished: \$21.58 ea

FINESSE

FINESSE

FINESSE



\*Standard White,



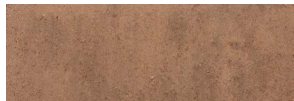
\*Standard White,



\*Standard White,



Hillcrest, Quartz



Hillcrest, Standard



Hillcrest, Suave



Silhouette, Quartz



Silhouette, Standard



Silhouette, Suave



Almond, Quartz



Almond, Standard



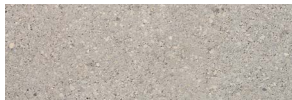
Almond, Suave



Mineral Gray, Quartz



Mineral Gray, Standard



Mineral Gray, Suave



Wheatfield, Quartz



Wheatfield, Standard



Wheatfield, Suave



Basil, Quartz



Basil, Standard



Basil, Suave



Polar White, Quartz



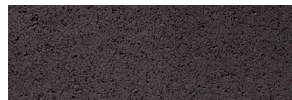
Polar White, Standard



Polar White, Suave



Ebony, Quartz



Ebony, Standard



Ebony, Suave



Canvas Beige, Quartz



Canvas Beige, Stan-



Canvas Beige, Suave



Redwood, Quartz



Redwood, Standard



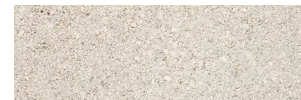
Redwood, Suave



Iceland White, Quartz



Iceland White, Stan-



Iceland White, Suave

Classic Colors: Almond, Basil, Canvas Beige, Hillcrest, Mineral Gray, Polar White, Redwood, Silhouette, Wheatfield  
Premium Colors: Ebony and Iceland White  
\*Standard White: only available as a window sill



FINESSE

FINESSE

FINESSE

# CLAY BRICKS

CROSSROADS SERIES

CROSSROADS SERIES

Crossroads Series Clay Brick			
Size	Imperial Modular	Queen	Premier Plus
Cost per brick	\$0.81	\$0.79	\$1.42
Cost per Cube	\$466.56	\$486.64	\$443.04
Length	7 5/8"	7 5/8"	10 1/8"
Height	2 1/4"	2 3/4"	3 1/8"
Depth	3 5/8"	2 3/4"	3 1/2"
Bricks per cube	576	616	312
Bricks per sq ft	6.8	5.7	3.9
Weight per cube	2,189 lbs	2,279 lbs	2,132 lbs
Weight per brick	3.8 lbs	3.7 lbs	6.8 lbs



This clay brick is produced in America and made from warm red clay unique to Indiana. This series offers a rugged tumbled appearance in a variety of rich tones.



**Benton**

Sizes: Modular, Queen,  
& Premier Plus



**Crawford**

Sizes: Modular, Queen,  
& Premier Plus



**Jasper**

Sizes: Modular, Queen,  
& Premier Plus



**Ripley**

Sizes: Modular, Queen,  
& Premier Plus



**Brownstone**

Sizes: Modular & Queen



**Gibson**

Sizes: Modular & Queen



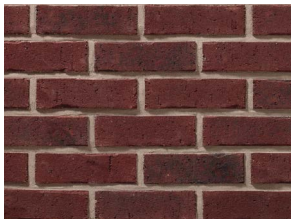
**Graystone**

Sizes: Modular & Queen



**Jefferson**

Sizes: Modular & Queen



**Marshall**

Sizes: Modular & Queen



**Monroe**

Sizes: Modular & Queen



**Morgan**

Sizes: Queen & Premier Plus



**Newton**

Sizes: Modular



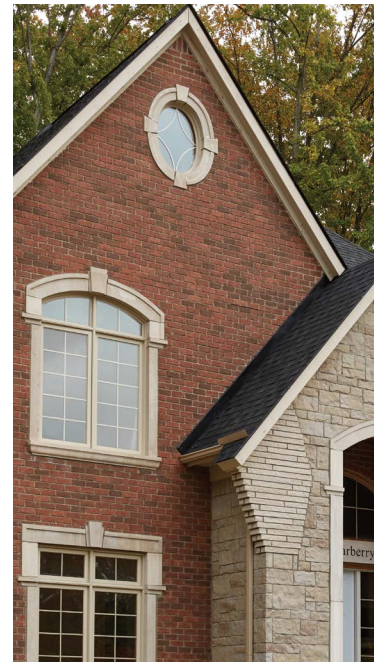
**Putnam**

Sizes: Modular & Queen



**Sullivan**

Sizes: Modular & Premier  
Plus





The color palette of this series has been developed to meet the needs of all design styles from traditional to contemporary. This popular brick features a velour texture with clean, straight edges.

### Select Series Clay Brick

Size	Imperial Modular
Cost per brick	\$0.81
Cost per Cube	\$466.56
Length	7 5/8"
Height	2 1/4"
Depth	2 3/4"
Bricks per cube	576
Bricks per sq ft	6.8
Weight per cube	2,189 lbs



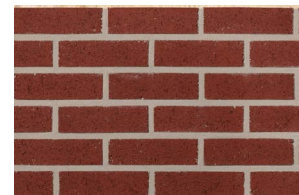
Amber



Kodiak



Maroon



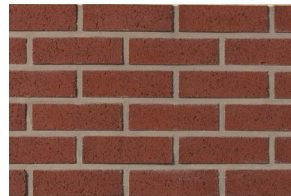
Moroccan Red



Rose



Silver



Sundown



Valencia

Manufactured in Indiana with native clay, this series features three unique, rich color blends that will create a warm but strong statement on any structure.



Harrison



Porter



Warren

### Hoosier Series Clay Brick

Size	Imperial Modular	Queen
Cost per brick	\$0.81	\$0.82
Cost per Cube	\$466.56	\$505.12
Length	7 5/8"	7 5/8"
Depth	3 5/8"	2 3/4"
Height	2 1/4"	2 3/4"
Bricks per cube	576	616
Bricks per sq ft	6.8	5.7
Weight per cube	2,189 lbs	2,279 lbs
Weight per brick	3.8 lbs	3.7 lbs



# CLAY BRICKS

ARCHITECTURAL SERIES

ARCHITECTURAL SERIES

Architectural Series Clay Brick			
Size	Imperial Modular	Premier Plus	Utility
Length	7 5/8"	10 1/8"	11 5/8"
Height	2 1/4"	3 1/8"	3 5/8"
Depth	2 3/4"	3 1/2"	3 5/8"
Bricks per cube	576	312	270
Bricks per sq ft	6.8	3.9	3.0
Weight per cube	2,189 lbs	2,132 lbs	2,457
Weight per brick	3.8 lbs	6.8 lbs	9.1 lbs



Colony Blend  
Modular \$1.01



Executive Blend  
Modular \$1.17



Harvest Blend  
Modular \$1.14

The wide range of colors, textures and sizes make this series ideal for a variety of building projects. This series pairs well with Vivace and Finesse to create an attractive mixed-medium design.



Dark Brown Smooth  
Modular \$0.94  
Utility \$2.40



Salmon Smooth  
Modular \$0.92  
Utility \$2.36



Red Smooth Cross  
Flashed Blend  
Modular \$0.84



Wheatland Smooth  
Modular \$0.92  
Utility \$2.36



Graphite  
Modular \$1.01  
Utility \$2.40



Dark Brown Velour  
Modular \$0.92  
Utility \$2.28



Salmon Velour  
Modular \$0.90  
Utility \$2.24



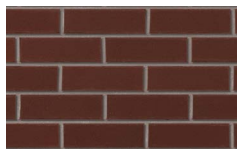
Red Velour Cross  
Flashed Blend  
Modular \$0.82



Wheatland Velour  
Modular \$0.90/brick  
Utility \$2.24/brick



Slate  
Modular \$1.01  
Utility \$2.40



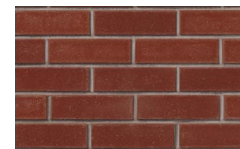
Brown Smooth  
Modular \$0.88  
Utility \$2.27



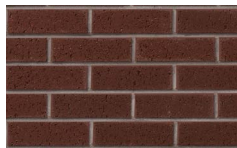
Buff Smooth  
Modular \$0.97  
Utility \$2.47



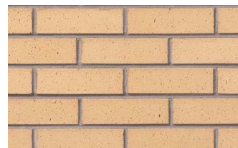
Gray Smooth  
Modular \$1.00  
Utility \$2.58



Red Smooth  
Modular \$0.84  
Utility \$2.23



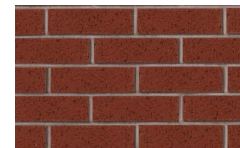
Brown Velour  
Modular \$0.86  
Utility \$2.16  
Premier Plus \$1.65



Buff Velour  
Modular \$0.95  
Utility \$2.36  
Premier Plus \$1.66



Gray Velour  
Modular \$0.98  
Utility \$2.46  
Premier Plus \$1.76



Red Velour  
Modular \$0.82  
Utility \$2.11  
Premier Plus \$1.50



# CONCRETE BLOCKS



Ideal for commercial applications, this series is available in a variety of sizes. The wide range of colors and finishes allow this series to compliment any design style and color palette.

*Classic Colors: Charcoal, Peel Beige, Peel Brown, Peel Gold, Peel Gray, Peel Silver*

PROFILE SERIES BLOCK		Classic Colors		Premium Colors	
Depth x Height x Length		Standard Finish	Quartz or Suave Finish	Standard Finish	Quartz or Suave Finish
90 x 90 x 290 mm (3 1/2" x 3 1/2" x 11 3/8")	10	\$3.58/ea	\$5.11/ea	\$4.26/ea	\$5.78/ea
90 x 90 x 390 mm (3 1/2" x 3 1/2" x 15 3/8")	12	\$4.96/ea	\$6.63/ea	\$5.75/ea	\$7.42/ea
90 x 190 x 390 mm (3 1/2" x 7 1/2" x 15 3/8")	27	\$9.47/ea	\$11.23/ea	\$10.88/ea	\$12.61/ea
90 x 90 x 590 mm (3 1/2" x 3 1/2" x 23 1/4")	18	\$10.91/ea	\$12.67/ea	\$12.79/ea	\$14.56/ea
90 x 190 x 590 mm (3 1/2" x 7 1/2" x 23 1/4")	37	\$14.24/ea	\$16.00/ea	\$16.75/ea	\$18.52/ea
140 x 90 x 390 mm (5 1/2" x 3 1/2" x 15 3/8")	13.5	\$8.18/ea	\$9.96/ea	\$10.07/ea	\$11.83/ea
140 x 190 x 390 mm (5 1/2" x 7 1/2" x 15 3/8")	31	\$11.28/ea	\$13.05/ea	\$13.80/ea	\$15.58/ea
190 x 90 x 390 mm (7 1/2" x 3 1/2" x 15 3/8")	19	\$10.78/ea	\$12.54/ea	\$12.66/ea	\$14.43/ea
190 x 190 x 390 mm (7 1/2" x 7 1/2" x 15 3/8")	39	\$14.29/ea	\$16.03/ea	\$16.78/ea	\$18.55/ea
240 x 90 x 390 mm (9 1/2" x 3 1/2" x 15 3/8")	22	\$12.16/ea	\$13.95/ea	\$14.05/ea	\$15.82/ea
240 x 190 x 390 mm (9 1/2" x 7 1/2" x 15 3/8")	45	\$15.95/ea	\$17.72/ea	\$18.47/ea	\$20.21/ea
290 x 90 x 390 mm (11 3/8" x 3 1/2" x 15 3/8")	28	\$13.56/ea	\$15.31/ea	\$15.45/ea	\$17.20/ea
290 x 190 x 390 mm (11 3/8" x 7 1/2" x 15 3/8")	57	\$18.28/ea	\$20.05/ea	\$20.80/ea	\$22.54/ea
90 x 190 x 190 x 390 mm Corner (3 1/2" x 7 1/2" x 7 1/2" x 15 3/8")	34	\$18.22/ea	\$19.96/ea	\$20.54/ea	\$22.27/ea

The Profile Series is a custom order product, minimum orders required, set-up charges may apply.

Absolute Black Quartz	
Absolute Black Suave	
Charcoal Quartz	
Charcoal Suave	
Eclipse Quartz	
Eclipse Suave	
Iceland White Quartz	
Iceland White Suave	
Peel Beige Quartz	
Peel Beige Suave	
Peel Brown Quartz	
Peel Brown Suave	
Peel Gold Quartz	
Peel Gold Suave	
Peel Gray Quartz	
Peel Gray Suave	
Peel Silver Quartz	
Peel Silver Suave	

PROFILE SERIES BLOCK



**GREEN MOUNTAIN VENEER**

40 South 116 Road  
Bristol, VT 05443  
(802) 377-3039

[greenmountainveneer.com](http://greenmountainveneer.com)  
[info@greenmountainveneer.com](mailto:info@greenmountainveneer.com)